

# ALADDIN

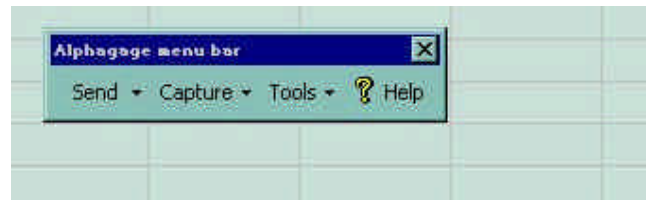
**ALADDIN is the latest software package for interfacing the Sonatest Alphasage with the operator's PC.**

This unique piece of software enables a more sophisticated and flexible analysis of the data read by the Alphasage. Aladdin has been designed in the form of a Microsoft Excel Add-in. This is integrated into Excel (v97 or later).

This software has proved to be a versatile tool and a very user friendly way to interface the Alphasage's data.



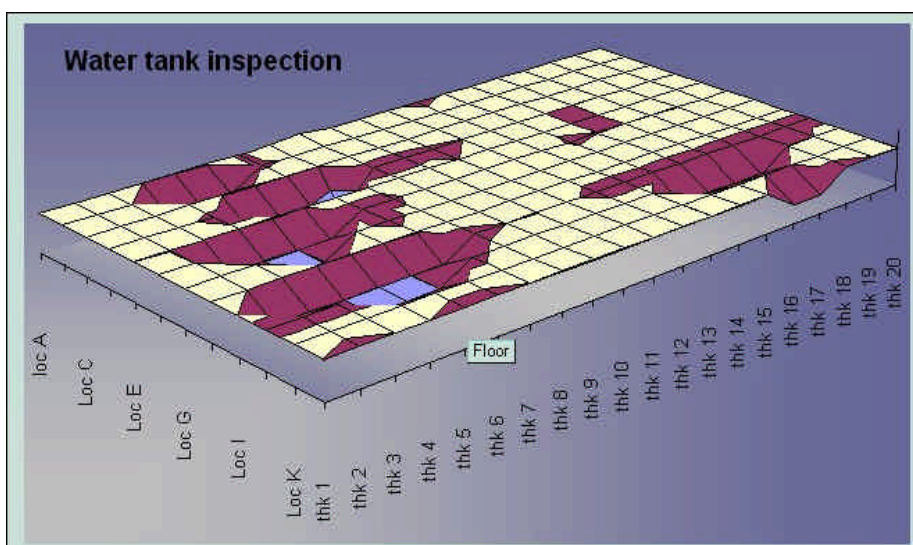
Alphasage



Menu Bar

## Main features of Aladdin are:

- Quick and easy user configuration of Alphasage memory
- Ability to extract thickness data from the unit into an Excel spreadsheet
- Editable Data
- Various "View" modes: Ascans, Thickness Profile, Thickness Contour Plot, 3D Contour Plot and Grid Views
- Graphic representation & 3D thickness contour diagrams of data.
- Allows the sorting and filtering of data
- Enables customization of output for printing reports or for presentations



3-D Thickness Contour Plot Diagram

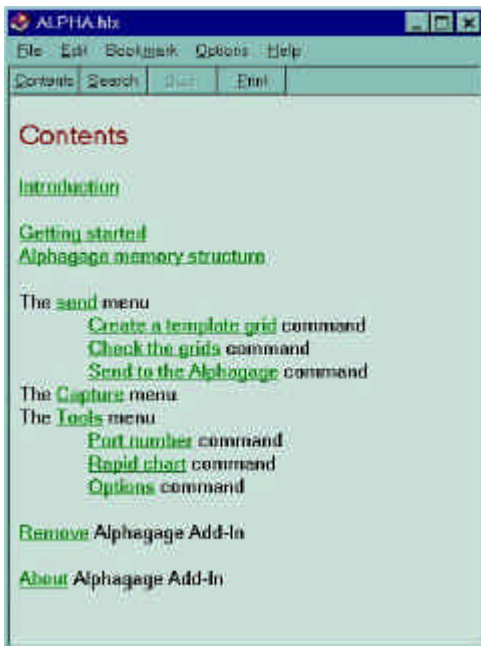
***Aladdin is being used successfully in a wide range of applications and has produced excellent results for many clients.***

	E	F	G	H	K	M	N	AB	AC	AD	AE	AF	A
1	<b>File</b>	<b>Loc</b>	<b>Thk</b>	<b>Panel</b>	<b>Thk valu</b>	<b>Time</b>	<b>Date</b>	<b>Ascan values</b>					
2	Pipe P0	P0 loc 1	P0 thk 1	255	1.46	9:27	12/2/02	2	2	2	0	0	
3	Pipe f			255	1.47	9:27	12/2/02	2	2	3	2	0	
4	Pipe f			255	1.47	9:27	12/2/02	2	2	2	0	0	
5	Pipe PU	PU loc 1	PU thk 4	255	1.39	9:28	12/2/02	2	2	0	0	0	
6	Pipe P0	P0 loc 1	P0 thk 5	255	1.39	9:28	12/2/02	2	2	0	0	0	
7	Pipe P0	P0 loc 1	P0 thk 6	255	1.4	9:28	12/2/02	2	2	0	0	0	
8	Pipe P0	P0 loc 1	P0 thk 7	255	1.41	9:28	12/2/02	2	2	0	0	0	
9	Pipe P0	P0 loc 1	P0 thk 8	255	1.39	9:28	12/2/02	2	2	0	0	0	
10	Pipe P0	P0 loc 1	P0 thk 9	255	1.39	9:28	12/2/02	2	2	0	0	0	
11	Pipe P0	P0 loc 1	P0 thk 10	255	1.4	9:28	12/2/02	2	2	0	0	0	

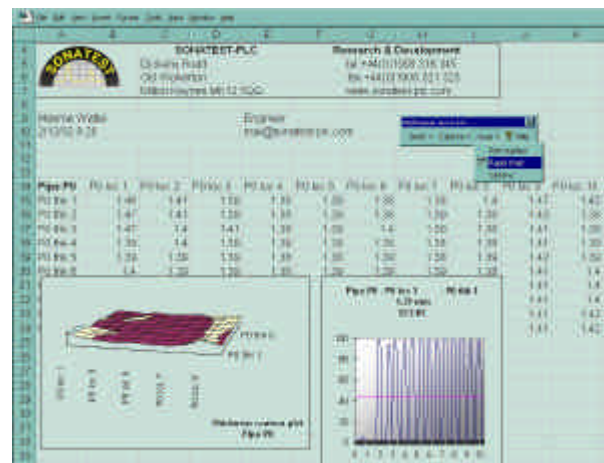
Thickness Data Spreadsheet

**A free 30 day trial of Aladdin is now available to download from the Software section under Products, on the Sonatest website.**

[www.sonatest-plc.com](http://www.sonatest-plc.com)



Help Menu



Inspection grids of thickness data

For further information contact:  
**SONATEST PLC**  
 Dickens Road, Old Wolverton,  
 Milton Keynes, Bucks,  
 MK12 5QQ, United Kingdom  
 Tel: +44 (0)1908 316345  
 Fax: +44 (0)1908 321323  
 Email: [sales@sonatest-plc.com](mailto:sales@sonatest-plc.com)  
 Web: [www.sonatest-plc.com](http://www.sonatest-plc.com)



For further information contact:  
**Distributed by:**